



Rocky Mountain Federation News

March/April 2019
Volume 50, Issue 3



The official publication of the Rocky Mountain Federation of Mineralogical Societies, Inc. The RMFMS is a regional member of the American Federation of Mineralogical Societies, Inc. and is issued monthly (except June and July). It is a privilege of membership of the RMFMS and cannot be exchanged by the editor for individual club newsletters from other regional federations.
www.rmfmts.org



Contents

From the Editor	2
Affiliations	2
Letter from the President	3
Treasurer's Report	4
Albuquerque Gem & Mineral Club's 2019 Rockhound of the Year	5
Set of North Sea Cores Studied by Pikes Peak Pebble Pups.....	6
Ancestral Puebloans and Geology	8
To Stop a Thief: A Letter Warning Cripple Creek's Winfield Scott Stratton	13
AFMS Show & Convention	17
Scholarship Committee Report -2019	18
Junior Activities.....	19
Upcoming Shows and Events.....	19
2019 RMFMS Convention Packet	25
2019 RMFMS Board and Committees.....	39

Cover photo courtesy and copyright of
Jonathan Dobbs of the San Juan County Gem
and Mineral Society. "Mount White, Chaffee
County, Colorado".

From the Editor

I apologize for the dual month newsletter. I received a lot of last minute content and real life got a bit crazy, but without further ado, here it is.

I'd love to see some write-ups of the fun times had by those who went to Tucson this year.

Please submit your contributions for the next issue by **April 12th** to rmfmseditor@gmail.com.

Heather Woods, PG

Affiliations

The Rocky Mountain Federation of Mineralogical Societies (RMFMS) is a member of the American Federation of Mineralogical Societies (AFMS).





Letter from the President

By Liz Thomas, RMFMS President

It is time to think about the Convention and Show in Prescott Arizona this coming August. I know everyone says it will be hot but I have done a lot of research and spoke to some people that live there and due to their elevation, which is 5,367 ft, their temperature stays in the 80's. This should meet everyone's comfort zones.

This will be a first for Prescott to host a Federation show. They are very excited and I know that they will show us all a great time. The show packet is included near the back of this newsletter. Please make sure every club members knows about the show and convention and if they need a packet, please pass one onto them. I am hoping we get every club with a representative at this show.



The packet includes information about the host hotel. You are not required to stay at the hotel. It included meals for some of the events. If you want to come to any of the events you may and you do not have to eat the meal they offer. Especially the Editors' Breakfast. We really need more people to show up to gather up all the awards for their club. The packet includes information about a field trip the host club will be offering for anyone that comes.

I want to see a 100% turn out with our Officers, Committees, Chairs, State Directors, PLAC, and Uniform Rules people at this convention. It is going to be a great one. I have truly appreciated working with each and every one of you and I want to say "Thank You", if not at the show then here. I do not say it near enough.

I hope to see you all there. Please come say hello.

Liz Thomas
RMFMS President



Treasurer's Report

By Gene Maggard, RMFMS Treasurer

Here are membership numbers from clubs' annual reports for 2018-19. Dues paying members are 10,052, total members are 11,153, and membership numbers for clubs subscribing to the RMFMS insurance is 10,258. This compares to 2017-18 numbers of 9,706, 10,706 and 9,926, respectively. We have 80 member clubs in 2018-19 as compared to 79 in 2017-18. We have two new clubs: The Northeast Wyoming Rockhounds of Gillette, and the Fossil Basin Mineralogical Society of Kemmerer. Cache Rock and Gem Club of Logan, Utah, elected not to maintain their RMFMS membership.

Membership dues collections was budgeted at \$14,600. Actual collections are \$15,006.50. Insurance premium collections was budgeted at \$6,200. Actual collections are \$6,161. The insurance premium payment to Philadelphia Insurance Company was budgeted at \$6,200. The actual premium is \$6,289. There will probably be a small supplemental billing from Philly because of the increase in insured member numbers of 332 members. The shortfall between insurance premium collections and payments of \$128 is not enough to justify an increase in club insurance payments of \$.60/member. We will see what a possible supplement payment will do.

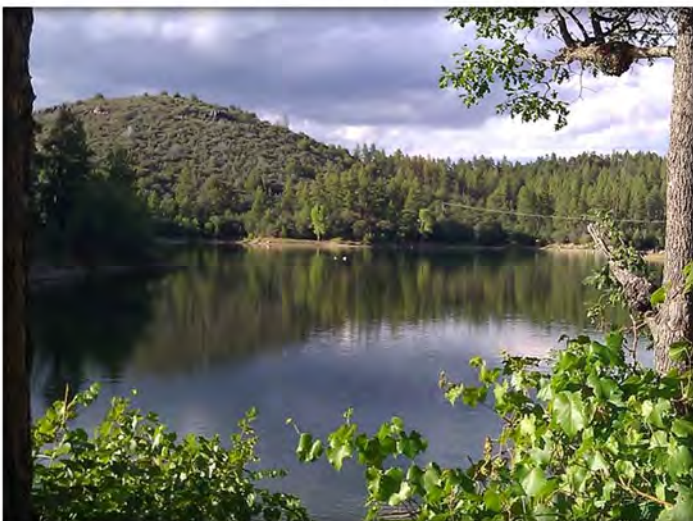
I feel pretty good about the dues and insurance collections, the overall membership increase, and the net increase of one club. It is too bad that there are a significant number of clubs in the Rocky Mountain region that elect not to be members of RMFMS, but I am happy that we have the members that we have. I can think of a half dozen large clubs that should be members but are not. I think that, overall, the Federation and its member clubs do a lot of good to promote rockhounding, defend public access to public lands, and educate many, many youth and adults in the earth sciences.

Just this past Saturday, Peggy and I hosted a class day at our abode for classes in silversmithing, cabbage, wire wrapping, gem tree making, and Kansas fossil identification. We try to do it every year. Kansas has lots of fossils but the mineral collecting is pretty sparse. It is always a great experience to teach a class and see all the learning that is going on. Besides that, the potluck lunch was terrific. The visiting and friendship was outstanding. Many club members in the Wichita Gem and Mineral Society got their start

in lapidary arts at our house/shop and have gone on to artistic and commercial success. This happens all over the Federation.

Happy rockhounding as the weather improves and all roads lead to Prescott August 1-5. I hope to see you there.

Gene Maggard
Treasurer





Albuquerque Gem & Mineral Club's 2019 Rockhound of the Year

The Albuquerque Gem & Mineral Club is pleased to announce it has chosen Dave Moats as its recipient for their 2019 Rockhound of the Year Award.

Dave has volunteered his service to fulfill various club duties continuously for more than 20 years.

He and his wife Karen became members of AGMC in September 1994 and Albuquerque residents in March 1979 after a job transfer from Memphis.

His volunteer spirit caught hold in 1996 when he served on the AGMC Board as the club's ad-hoc. His years of service continued as AGMC Special Award Judge at the Science Fair (along with Hank Miller) for 20 years 1996 through 2015, was our club's annual show Silent Auction Chairman 1998 - 2005, State Fair Coordinator 1999, club Secretary 2001 - 2003, and most notably in his current position as AGMC Historian from June 2000 to present. His dedication to this last position has allowed our club to enjoy 'blasts from the past' in our monthly newsletter, giving us insight into the development of the club we all so enjoy today.

Dave has done an outstanding job of preserving and disseminating the information that forms the bedrock foundation for this club's great history. 2019 is the Albuquerque Gem & Mineral Club's 75th anniversary, which we are celebrating all year including our 50th Gem and Mineral show on March 15-17.

When asked he said his hobbies and passions "include road trips in our trailer with our little dog, always finding interesting places that most people fly over or pass by on the interstate. I'm always on the lookout for interesting geology, paleontology, mineralogy and museums. In fact most of our trips are planned with these interests in mind." He and Karen are also members of the New Mexico Westerner's Association, a group of historian's and writers with monthly presentations on subjects associated with New Mexico and the western US.

Our club is proud to recognize such steadfast devotion with this award, as without the quiet dedication of volunteers like Dave we might not appreciate what a wonderful organization we now enjoy.

Thanks Dave!





Set of North Sea Cores Studied by Pikes Peak Pebble Pups

By Steven Wade Veatch, Colorado Springs Mineralogical Society

On Saturday, February 16th, a joint session of the Colorado Springs Mineralogical Society Pebble Pups and the Lake George Gem and Mineral Club Pebble Pups met at the Woodland Park Library to study a set of cores drilled from the floor of the North Sea. Nine Pebble Pups were in attendance, along with several adult members who were interested in the cores.

John Rakowski, a Lake George Pebble Pup leader, presented the session and worked with the Pebble Pups during the morning class. John talked about petroleum exploration and the use of cores drilled from sedimentary rock. John discussed the resistivity differences of sandstone wet with water versus sandstone with gas in the pore system. He explained the concepts of porosity and permeability and showed how the well log's sonic velocity readings can be used to derive porosity. The Pebble Pups learned many things, including about careers in geology.

The cores were sent to the Pebble Pups through the North Sea Core Initiative, a program set up in response to the release of core material by oil and gas companies, through the relinquishment, abandonment and decommissioning of fields along the UK Continental Shelf. Core material provides an incredible resource for understanding the subsurface and it is invaluable to geologists. Both clubs helped pay the costs of transporting the cores to the Pebble Pup class room from Aberdeen, Scotland.







Ancestral Puebloans and Geology

By Mike Nelson, Colorado Springs Mineralogical Society, csrockguy@yahoo.com

LOOKING FOR THE ANCIENTS or HOW GEOLOGICAL FEATURES ALLOWED A THRIVING POPULATION OF ANCESTRAL PUEBLOANS TO FLOURISH

When the ancients moved, they left behind the buildings for a purpose. These places are the kiikiqo or footprints. These buildings, ashes, pottery, and petroglyphs were left to show we are connected to the Hisatsinom (Ancestral Puebloans).

Morgan Saufkie, Bear Clan, Hopi Tribe

Growing up I was always fascinated with history whether plants or rocks or humans. Unfortunately, my undergraduate institution did not offer archaeology courses, or I might have majored in that particular area. However, they did have geology and so I was off to the races. The closest I came to working with human history was in my collecting of Pleistocene mammals in Utah—the State Archaeologist was always after me to look for butchering marks on the bones. From my point of view, it was extremely difficult to distinguish these sorts of marks from “natural” scars. So, I failed at this endeavor. I always thought that if reincarnated, coming back as an archaeologist would be nice.



The famous lizard petroglyph at Dinosaur National Monument constructed by members of the Fremont Culture.

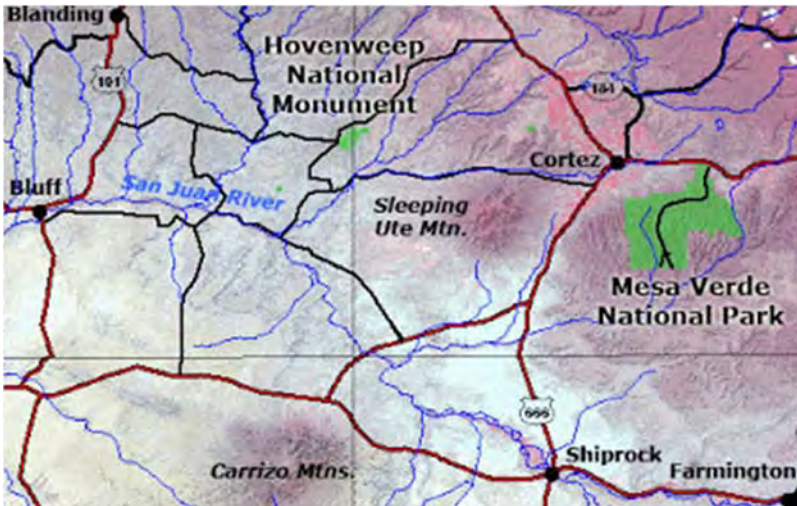
During my three summers of work (early 1970s) as a Ranger Naturalist in Dinosaur National Monument I became fascinated with the numerous petroglyphs (painted) and scarce pictographs (chipped and pecked) scattered around the land. In fact, I tried to photograph each known glyph—both in color and in black & white. Some glyphs were close to roads and were easy to access (but often defaced by visitors). Others were in the back country that required hiking. At that time in my life I could, and did, walk many miles without problems. The color camera was a small Pentax with an over the shoulder strap. But wait---the black and white was an old (and large

and heavy) 4 x 5 (inches) piece of work with really great optics. It also needed to be mounted on a cumbersome (and heavy) tripod where the “picture taker—me” loaded the negative, threw a black cloth over my head and camera, and focused, pushed the timer button, carefully took out and protected the



negative, and moved on. Back at the quarry I developed and printed the back and white negatives. The optics, plus the large negatives, allowed “really large” enlargements! I often wonder if the monument archives still have those photos.

Since my stint with the Park Service I have always tried to visit older Anasazi sites, mostly near paved roads, during my many trips to the Mountain West. But wait—sometime in the past decades I learned the term Anasazi should be replaced by the term Ancestral or Ancient Puebloans. It seems the Navajos



Map, courtesy of USGS, showing location of Hovenweep National Monument northeast of Bluff on the Utah-Colorado state line.

(Diné) told the early non-Native American explorers and traders the Anasazi (meaning ancient enemies) constructed the numerous abandoned pit houses and pueblos---and the name stuck until recently.

I am an avid reader of Mountain West history and long ago decided that Hovenweep National Monument, northeast of Bluff, Utah, was on my Bucket List. The Monument is one of those places that is a destination point and not a “dad, let’s pull off to see the Indian ruins as I need to potty.” One needs to “be going” to Hovenweep in order to get there!

So, off we go through a narrow canyon leaving the cozy campground at Bluff (see previous Newsletter) and heading north towards Blanding, Utah, on U.S. 163. The summit of the canyon is a broad plateau held up by the Jurassic Bluff Sandstone (which may be a local stand-alone formation or a local member of the Morrison Formation).

After about 10 miles of travel Utah 262 takes off to the right (east) heading to Hovenweep; follow the signs and don’t wander off. Along the way there are a few outcrops of Late Jurassic Morrison Formation; however, the roads traverse mostly on the overlying Cretaceous Dakota Formation. This highland is part of the Great Sage Plain, named not for a geomorphic expression of landscape but for a plant, big sagebrush (*Artemisia tridentata*). The Plain ranges in elevation from about 7,000-5,000 feet and is part of Colorado Plateau Physiographic Province. The Plain stretches from near Monticello and the Abajo Mountains (north of Blanding) southeast to the San Juan Mountains in southwestern Colorado and is



The Bluff Sandstone forms a narrow canyon along the highway leading out of Bluff and also is the caprock of a broad plateau at the summit.



home to the largest concentration of Ancestral Puebloan structures in the U.S. The Cajon Mesa is a particular subsection of the Plain and is the location of Hovenweep.



Dakota Formation, the caprock at Hovenweep.

What attracted these early Americans to Cajon Mesa? Well, the same thing that attracts farmers to land today—water and soils capable of growing crops. But I could say that *geology attracted* the Ancestral Pueblos. Soil developed on the Plain via wind-blown sand and clay (termed loess) and probably was associated with winds from the southwest during the last 10,000-12,000 years. These loessal soils can be quite rich when water is available. On the Cajon Mesa the Dakota Formation (Cretaceous) forms the upper rimrock and is composed of sandstone and mudstones with a few beds of poor coal.

The Dakota is a mixture of stream, swamp and maybe some beach sands as the unit represents an initial transgression of marine waters onto the continental western interior. In fact, we term this great inland sea the Western Interior Seaway and it stretched from Utah to Minnesota and Missouri and from Alaska to the Gulf of Mexico.

Below the Dakota Formation is the Burro Canyon Formation, also of Cretaceous age but older than the Dakota, that is composed of a variety of braided stream-deposited rocks: conglomerate, sandstone, shale, mudstone, limestone and tightly cemented quartz sandstone (wrongly termed quartzite). So, when water does arrive in the form of summer monsoon rains or winter snows it gathers in pot holes on the massive rimrock, or seeps into and through the Dakota rocks until it reaches the Burro Canyon, a rather impervious layer. At that point the water begins to move horizontally and when it reaches the canyon at Hovenweep it forms seeps or springs. The inhabitants were then able to capture the water by use of dams.



The Burro Canyon Formation underlies the Dakota Formation at Hovenweep. Part of the formation is a very indurated conglomerate. Photo courtesy National Park Service.



On Cajon Mesa the Ancestral Puebloans constructed terraces to funnel rain water and dams to catch the water so that crops (mainly corn, beans and squash) could be irrigated. The inhabitants were farmers rather than hunters-gathers that preceded them.



Masonry blocks used to construct the buildings at Hovenweep were quarried from the Dakota Formation – without the aid of steel chisels to shape.

Geology also played other important roles. For example, the sandstone layers in the Dakota provided the masonry blocks for construction of the towers and buildings. Some of the conglomerate beds in the Burro Canyon contain numerous chert and flint cobbles that provided material for projectile points.

The six groups of masonry structures at Hovenweep were constructed by Ancestral Puebloans who first settled in the area ~500 A.D. and farmed portions of the Cajon Plateau and parts of the inner canyons (hunters and gatherers,

temporary residents, were probably in the area ~8,000-5,000 BC until the Ancestral Puebloans arrived). As noted above, Ancestral Puebloans built terraces and water dams and granaries; the latter storage areas were in the canyon to better protect crops like corn. But as the population soared (~2,500?), workers needed to travel further away “from their canyon home” to collect wood and plant/harvest crops. Archaeologists believe the population peaked between 1,200-1,300 A.D. and soon after that they, like the inhabitants of Mesa Verde and other living centers, left the area to start a new life in the Rio Grande and Little Colorado River valleys. Researchers are uncertain about this move but suspect drought, warfare and overpopulation. Does this ring a bell today?

As a native Kansan I often wonder if the population of western Kansas will decrease significantly when irrigation waters of the Ogallala Aquifer are depleted? What happens when Lake Mead on the Colorado River cannot provide enough water for the agriculture and growing population of California and



Tower Point Ruin. “We come here to visit our ancestors. They are all around.” – Victor Sarracino, Water Clan, Pueblo of Laguna.



Arizona? Where will the people of Syria go since their country's infrastructure is essentially destroyed? As climate change moves forward where will large populations along the U.S. coasts migrate (after being flooded out from rising sea level)? Maybe Elon Musk will take us to Mars!



Twin Towers. "Through the strength of the spirits, our ancestors built these dwellings here." – Earnest Service.
M. Vallo, Sr., Eagle Clan, Pueblo of Acoma.

One of the great views at Hovenweep is to the east and of Ute Mountain or Sleeping Ute Mountain not far over the line in Colorado. Like other isolated mountain ranges (~12 x 5 miles with a topographic relief of ~4,000 feet and an elevation of ~9,984 feet) in this section of the Colorado Plateau, Sleeping Ute



Sleeping Ute Mountain as viewed from Hovenweep. Dakota Formation is foreground as caprock. Photo courtesy National Park Service. "The Hopi name for Sleeping Ute Mountain is Hon tsomo or Bear Mountain." – Consensus of Elders, The Hopi Tribe

Mountain is a laccolithic range---overlying sedimentary rocks have been domed up by the rising igneous magma and then the less-resistant rocks were eroded. Unlike the other Plateau mountains such as the Henry Mountains, the Abajo Mountains and the La Sal Mountains, the Sleeping Ute Mountain was intruded into overlying rocks in the Late Cretaceous ~72 Ma. The other ranges are much younger, perhaps ~25-28 Ma in the Tertiary. The name, Sleeping Ute Mountain, comes from the profile of a Ute warrior lying on his back with his arms folded. Sleeping Ute Mountain is not on a "main road" and is situated inside of the Ute Mountain Ute Reservation and plays a role in some of their ceremonies.



President Warren G. Harding was correct when in 1923 he established a national monument preserving the amazing structures built by a group of Ancestral Puebloans. Many readers may have visited the structures at nearby Mesa Verde National Park (established 1906) but if travelers are in the area, get a map and take the detour to Hovenweep National Monument. It is a great place to learn how these ancient Americans understood geological processes and used them in their everyday living. It is an amazing place and I can check it off my bucket list!

If you want to understand today, you have to search yesterday.

Pearl Buck

To Stop a Thief: A Letter Warning Cripple Creek's Winfield Scott Stratton

By Steven Wade Veatch, Colorado Springs Mineralogical Society

It began with a letter that Augustus Dominick Bourquin, a Colorado prospector, wrote to warn Winfield Scott Stratton, the Cripple Creek mining mogul and owner of the Independence Mine, about one of his employees at the mine.

Bourquin's letter is an exceptional illustration of a primary source that offers a first-hand eyewitness account of events. It helps us take a front-row seat to the unfolding of history. Bourquin's letter is among Stratton's historic papers that are stored at the Western Museum of Mining and Industry in Colorado Springs, Colorado.

In his letter, Bourquin warns Stratton that one of his employees, John Stark, is a thief. According to Bourquin's letter, John Stark was an unscrupulous man that committed acts of larceny wherever he went. Stark even raided the caches of clothes and supplies miners left covered with rocks along the trail on their way to the Klondike goldfields, depriving those miners of necessary supplies. Bourquin's letter also mentions the problem of high-grading or theft of gold in the Cripple Creek mining district. Here is his letter:

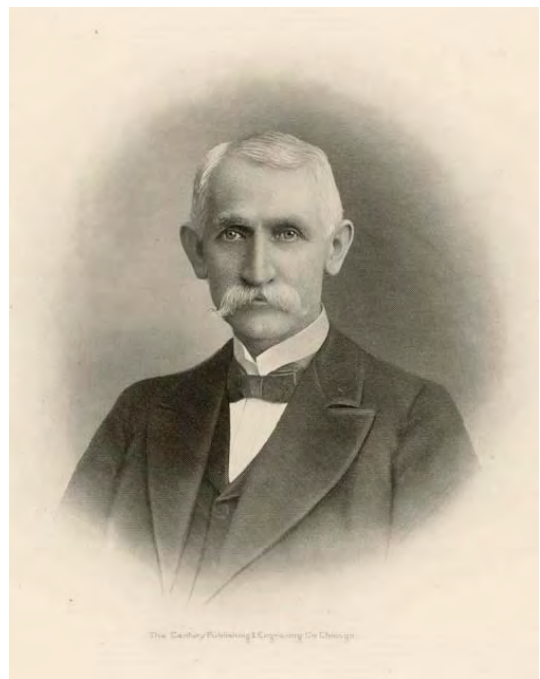


Figure 1. W. W. Stratton (1848-1902) came to the Cripple Creek Mining District in 1891 when he was 42 years old and staked the Independence Mining claim on July 4, 1891. The Independence was among the major producing mines in the district and made Stratton a multi-millionaire. This image is in the public domain in the United States.



Aspen, Colo. Oct. 17th, '98.

W. S. Stratton
Victor, Colo.

Dear Sir—

I feel that it is my duty to give you a little of the history of a man who is now in your employ [sic]. A man who has proven himself a thief on every occasion where he has had an opportunity to pilfer from others. That man is no other than John Stark. Mr. Stratton, I returned in Aug. from the Klondike and was a partner during the winter with Stark. There was [sic] four of us in partnership on a lay, or lease, on Bonanza Creek.¹ Stark began pilfering aboard the steamship Cleveland on his way north from Seattle.² Stole his winter supplies from one of the Mercantile Co's at Fort Yukon.³ He robbed [sic] one of our partners of every dollar of gold dust he had, on the pretense, that he, Stark, would take it down and deposite [sic] it with his own in Dawson.⁴ Stark skipped the country between two days and carried off all the dust, leaving our partner stranded in Dawson where he is today.

Stark robbed [sic] caches of clothing and provisions whenever he had an opportunity, against my protest. He stole clothing and provisions from the cache of some poor fellows who had to walk out of the country during the winter on account of a shortage of food. Stark robbed [sic] me of nearly \$200 of which I cannot recover as the theft was committed [sic] in Canadian Territory [sic].⁵ The Mercantile Co. who he robbed in Fort Yukon were [sic] on his track in Dawson, when he, under an assumed name, left Dawson between two days in a small boat, about June 1st.

Stark often spoke of his work on the Independence mine. Said he has some rich ore from the mine; one piece worth eighty dollars. Spoke of your keeping detectives around all the time but they were not sharp enough to catch anyone. Said he had cut a rich streak of mineral fifteen inches thick and timbered it in, with the help of the Super, hoping someday to get a lease on the ground. According to his statement the superintendent stood in with him, but his name I have forgotten. This unscrupulous scoundrel spoke very disrespectful [sic] of you at different times. Said you had nicely furnished rooms in Cripple for no other purpose, that he knew of, but to take lewd women and have a good time. Mr. Stratton, I have given you simply an outline of the methods practiced by that scoundrel, that you may not be deceived by him. I regret to hear that he has secured a trusty position on your property when there are more worthy people to be had. I can make an affidavit to thease [sic] statements should you desire.

Very respectfully,

A.D. Bourquin



Although it is clear from the letter that Bourquin had a negative attitude toward Stark based on his alleged dealings with him, perhaps we can judge the veracity of his claims by studying Bourquin's life story. Augustus Dominic Bourquin was born in 1852 in Tidioute, Pennsylvania. Known as "Gust" to his friends, this free-spirited young man craved adventure and excitement.

In 1875, Bourquin first moved west and worked a placer mine in Arizona. Later, he worked in the mines at Red Bluff, California and Reno, Nevada. Bourquin returned home in the fall of 1877 and worked on the family farm in Pennsylvania (Bourquin, 1951). Next, he traveled to Kansas in 1879, where he homesteaded (Bourquin, 1951). Bourquin moved to Kansas at a bad time—a drought held Kansas in its dry and dusty grip. The *Manhattan Nationalist*, on April 25, 1879, had this to say: "The wind made the bleeding soil of Kansas sift through a pine board on Monday [April 21]. The poor housekeeper that had just shaken carpets and cleaned windows, sighed mournfully as they [sic] saw the sand heaps on windowpane and floor" (Malin, 2018). This relentless drought ended his days of homesteading, and in the spring of 1880, Bourquin, along with his two brothers George and Jess, traveled west as they drove a team of mules and a wagon to Denver (Clark, 2018). The brothers then sold the mules and Bourquin trekked to Aspen, Colorado. He operated several mining claims in the area and served as councilman for the City of Aspen (Clark, 2018).

Bourquin caught a bad case of gold fever and joined the Klondike Gold Rush. After spending a season in the Klondike washing gold-laden gravels in Bonanza Creek, he returned to Aspen, Colorado.

Bourquin died a few months after he mailed his letter to Stratton. He had caught the flu while working on a mining claim and died five days later, on Jan 14, 1899, at the age of 46 (Clark, 2018). The Woodmen of the World, a fraternal benefit society designed to provide insurance and financial security for its members, buried him in the Aspen Grove Cemetery in Aspen, Colorado. Bourquin's family then moved his body to the Red Butte cemetery after it opened in 1900. His mother Celestine is buried in the same plot, along with his brother Amos, Amos' wife, and their daughter.

And so, a letter reveals a first-hand account of an episode in the writer's life. The letter led to research that painted a portrait of the writer, A.D. Bourquin, who spent a life well-lived as a miner and adventurer. He followed the trails that pointed to gold and silver deposits, no matter how difficult the passage. All regarded him as fine man and a pioneer who guided his family to the West.

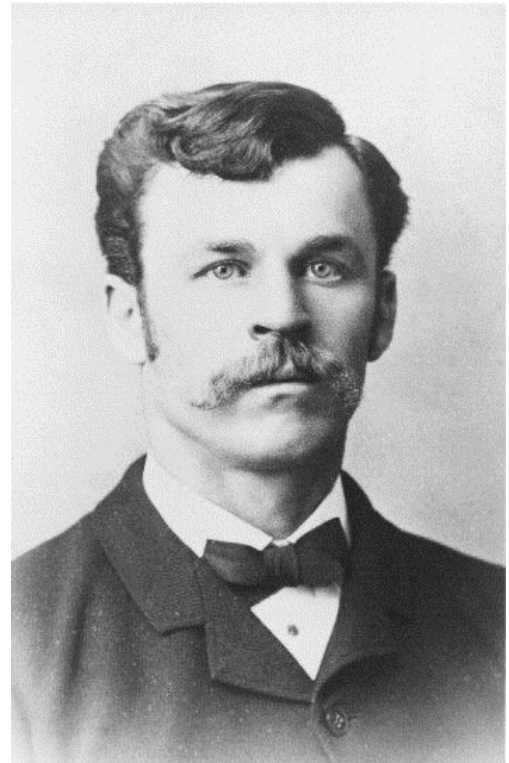


Figure 2. Photo of A.D. Bourquin (1852 to 1899). His father was Swiss and his mother was French. Bourquin was noted in the Aspen newspapers as being a principal in the Austin Mining Excavating Company. Photo source: Robert Clark (great-grandson). Used with permission.



Although we will never know if Stratton answered Bourquin's letter, it is known that John Stark, after his adventures in the Klondike, returned to the Cripple Creek Mining District and worked as Stratton's foreman at the Independence Mine. Eighteen months later, Stark was promoted to superintendent of the Independence Mine (*The Fortunes of a Decade*, 1900). It seems that Stratton did not read Bourquin's letter or believe what it said about his foreman, and as a result, we may never know the facts that surrounded Stratton's decision to ignore the warning in Bourquin's letter.

References

Andrews, C. L. (1916, January). Marine Disasters of the Alaska Route. *The Washington Historical Quarterly*, 7(1), 21-37. Retrieved December 2, 2018, from www.jstor.org/stable/40428352

Bourquin, G. M. (1951, October 22). *Letter to Edna Florence Bourquin Reynolds*.

Clark, R. (2018, December 2-5). Great-grandson of A.D. Bourquin. (S. Veatch, Interviewer)

Malin, J. C. (2018, December 1). *Dust Storms: Part Two, 1861-1880*. Retrieved from Kansas Historical Society: <https://www.kshs.org/p/kansas-historical-quarterly-dust-storms-part-two-1861-1880/13031>

McLaughlin, L. (2018, December 7). *Yukon History*. Retrieved from Hougen Group: <http://hougengroup.com/yukon-history/yukon-nuggets/year/1897/#STARVATION>

The Fortunes of a Decade. (1900). Colorado Springs: Sargent and Rohrabacher for the Evening Telegraph.

What Was the Klondike Gold Rush? (2018, June 28). Retrieved from Klondike Gold Rush National Historic Site: <https://www.nps.gov/klgo/learn/goldrush.htm>

Woodin, W., & Spude, C. H. (2016). *All for the Greed of Gold: Will Woodin's Klondike Adventure*. Seattle: Washington State University Press.

Notes on the letter

¹ On August 16, 1896, prospectors discovered gold on Bonanza Creek, a tributary of the Klondike River in Canada's Yukon Territory. The watercourse became the center of the Klondike Gold Rush (1897-1898). This discovery triggered a stampede of thousands of prospectors and fortune seekers to the area (*What Was the Klondike Gold Rush?*, 2018).

² The *Cleveland*, operated by the North American Trading & Transportation Company, was one of many steamships that carried passengers to and from the Klondike goldfields (Woodin & Spude, 2016). The company sold fares only to the "hardest of men." The demand for a ticket was high. After leaving Seattle's docks, the *Cleveland* went as far as Fort St. Michael, where a connection was made with river steamers that took passengers and goods up the Yukon River to the mines. Fort St. Michael was established by the US Army in 1897 to establish order during the Klondike Gold Rush and served as a major gateway through the Yukon River to the area. In 1903, the *Cleveland* was lost in the Bering Sea and was never recovered (Andrews, 1916).

³ Fort Yukon, during the Klondike Gold Rush ("Starvation Winter" of 1897-1898) took in 200 prospectors from Dawson City who were short of supplies (McLaughlin, 2018).

⁴ Dawson City, the center of the Klondike Gold Rush, began in 1896, where it displaced a native encampment. The city grew into a busy place of 40,000 by 1898. A year later, after the gold rush ended, its population plummeting to 8,000 people.

⁵ The stolen \$200 is equivalent to \$2,855 in 2018 dollars.



AFMS Show & Convention

Cedar Rapids, Iowa – March 22-24, 2019

By Richard Jaeger, RMFMS Past President

I attended the AFMS Show & Convention in Cedar Rapids, Iowa, which was hosted by the Cedar Valley Rocks and Minerals Society. Our Federation was represented at the AFMS Board Meeting by Liz Thomas, RMFMS President and Bob Regner, RMFMS Vice President. Judy Beck also represented the RMFMS on the board as AFMS 1st Vice President. Paul Otto represented the RMFMS at the Uniform Rules meeting and helped with judging the competitive cases; I also helped with the judging. Judy Beck, was elected as AFMS President Elect. The Board Meeting had a couple of items which brought a fair amount of discussion but no final decisions were made. The AFMS Scholarship Foundation meeting followed the AFMS Board meeting; our Federation was represented by Liz Thomas and Bob Regner. Other RMFMS officers and committee members who attend the show were DeLane Cox, Wayne Cox, Linda Jaeger, Richard Jaeger, and Sheri Johnson. Other members attending were Larry Beck, Larry Havens, Kent Havens, Hattie Otto, Donna Regner, and Ben Thomas. Ron Carman, who attended, is almost an 'honorary' RMFMS member. Hope I haven't left anyone out.

It was an enjoyable show with about 35 dealers and about 30 display cases, with just 3 of those being competitive. The Awards Banquet and the Breakfast with the Editors were well attended and several Rocky Mountain Federation clubs and members received awards. The three competitive cases were all entered by Rocky Mountain Federation members – Larry Havens, Kent Havens, and Paul Otto- and all three received AFMS Trophies; Kent Havens also received a Midwestern Federation Competitive Trophy. Three awards were given for All-American Clubs; two of those were from the RMFMS. The Grand Junction Gem & Mineral Club received I believe a silver award. The McPherson Gem & Mineral Club received a gold award in the All-American Club Competition; Judy Beck prepared their entry. Linda Jaeger and Sheri Johnson won prizes in the AFMS Endowment Fund drawings. Other Rocky Mountain Federation members holding AFMS committee chairmanships this coming year will be Jay Bowman - Publications Chair, Robert Carlson - Boundaries Chair, Wayne Cox - Finance Chair, and Richard Jaeger - Ways & Means Chair.

I enjoyed visiting the Cedar Rapids Art Museum but business items and the weather kept me from doing much else besides the show. As usual, the most enjoyable thing for me was getting to visit with fellow rock hounds from across the United States who I only see once every year or two, while at the same time making new friends. I was literally able to visit with friends from New York, Virginia, Connecticut, Washington, Oregon, California, Florida, and many states in between. The Midwest Federation and Cedar Rapids Club were wonderful hosts for the show and their members were friendly and helpful.

Next year the AFMS show is in conjunction with Southeastern Federation; they do not have a date or a location as of yet but are hoping it will be in Knoxville, Tennessee. Hopefully a number of our Rocky Mountain Federation members will be able to attend the show.



Scholarship Committee Report -2019

By Richard Jaeger, RMFMS Scholarship Chairman

April 4, 2019

Five Rocky Mountain Federation clubs, and an individual, have contributed to the AFMS Scholarship Foundation since the fiscal year began on Nov. 1, 2018.

A couple of the donations designated for clubs were at least in part actually made by individuals in those clubs.

The clubs, the amount they contributed, and the percentage to which that brings them are listed below. A percentage of 2500% would mean the equivalent of the club donating \$1/member for 25 years.

Fort Collins Rock Hounds Club**	\$270.00	3100%
Stillwater Mineral & Gem Society**	\$75.00	5700%
Topeka Gem & Mineral Society	\$309.15	14700%
Tulsa Rock & Mineral Society	\$335.00	4300%
Wichita Gem & Mineral Society**	\$150.00	5000%
Muriel Frink**	\$50.00	
Total Donations	\$1,189.15	

The donations from the Fort Collins club were made in memory Russ Miller and Alley Cat Way (really!). The donations the Stillwater club were made in the memory of Larry Crow, John Worden, and Janet Cayot.

The donations from the Wichita club were made in the memory of Pat Clough-McCombs and Alice Piper. The donation from Muriel Frink was made in memory of Fred Schaefermeyer.

I hope that we will have contributions by a number of other clubs before the year is out. Remember that through the AFMS Scholarship Foundation, our RMFMS is able to award two \$4,000 scholarships each year to graduate students majoring in the Earth Sciences. These donations are also an excellent way to honor the memory of members who have passed away.

Respectfully submitted,
Richard Jaeger
Scholarship Chairman





Junior Activities

By Jim Brace-Thompson, CFMS & AMFS Juniors Chair

Spotlighting Your Best & Brightest Kids in *Rock & Gem*

As many of you know, I write articles for the Kids' Page section of *Rock & Gem* magazine (the "official" hobby magazine of the American Federation of Mineralogical Societies). Within this section, I have occasionally run articles about outstanding juniors in an informal series called "Spotlight on Juniors." In the past few years, I've spotlighted seven kids, in particular, but I would like to spotlight many, many more. For this, I need your help!

The intent of my "Spotlight on Juniors" series is to highlight interests and accomplishments of kids, both to honor those who deserve special recognition and to provide role models for other kids. Do you have a pebble pup or junior member (up to age 18) in your society who is completely "rock crazy" and gung ho about our hobby? If so, please contact me with names and details about kids whom you believe deserve special recognition, along with a photo or two. I'll be happy to do a write-up on them for publication in *Rock & Gem Kids*.

As a start, consider kids that your club has nominated for Junior Rockhound of the Year within the regional and AFMS recognition program. I know that many such kids have been honored in this way in recent years. Please contact me (jbraceth@roadrunner.com, 805-659-3577) and we will get the ball rolling on an article honoring and sharing the unique and individual fun and joy each child brings to our hobby!

Upcoming Shows and Events

April 12, 2019; **North Jeffco Gem & Mineral Club's Silent Auction**; Friday – setup at 5:30pm, auction begins at 6:45pm; Free admission and parking; APEX Community Recreation Center, 6842 Wadsworth Blvd., Arvada, Colorado. Jewelry, gems, minerals, bake sale, crafts, free refreshments, public invited. For more information: Bill Jones (303) 503-6288, sidewindermin@comcast.net.

April 13 – 14, 2019; **Northwest Arkansas Gem and Mineral Society's Annual Show**; Saturday 9am-5pm and Sunday 10am-4pm; Admission donation \$3, children under 12 free; Siloam Springs Community Building, 110 N. Mt. Olive Street, Siloam Springs, Arkansas. You'll find geodes, rocks, minerals, fossils, jewelry, silent auction, prize drawings, live demonstrations, mountings, rough material, slabs, specimens, mineral identification, exhibits, and much more. This is a family friendly event. For more information: [Facebook.com/NWAGMS](https://www.facebook.com/NWAGMS).

April 19 – 21, 2019; **Wasatch Gem Society's Annual Gem, Mineral, and Fossil Show**; (See flyer on page 21) Friday and Saturday 10am-6pm, and Sunday 10am-4pm; Admission \$2, free parking; Salt Lake County Equestrian Center, 11400 S. 2100 W. South Jordan, Utah. We're the largest club sponsored show in Utah with 67 vendors, education, demo and community tables, silent auction, door prizes, wheel of fortune, kids' table and much much more!



April 25 – 27, 2019; **Wichita Gem & Mineral Society's Annual Show: Rocks of the USA;** (See flyer on page 22), Friday 9am-6pm, Saturday 10am-6pm, and Sunday 10am-5pm; admission \$5 adults, \$4 with coupon, students 13 to 17 \$1, children under 12 free with adult admission, Cessna Activity Center, 2744 George Washington Blvd., Wichita, Kansas. With a focus on kids and earth sciences, the Gem and Mineral Show features club exhibits, demonstrations, kids activities, (door prizes and silent auctions on Saturday and Sunday). Friday is Schools and Scouts day. Exhibitors will feature an array of dealers displaying rocks, minerals, fossils, gemstones, jewelry, and more. Kids activities include the Junior Rock Pile, Gem Hunt, Fossil Hunt, Spin the Wheel, grab bags, and a great fluorescent display. Food and free parking available. Contact Gene Maggard: (316) 742-3746, gandpmaggard@gmail.com, or www.wgmsks.org for more information.

May 3 – 5, 2019; **McPherson Gem & Mineral Club 27th Annual Sale;** (See flyer on page 23) Friday and Saturday 9am-6pm, and Sunday 10:30am-3pm; Auction on Saturday at 7:15pm; Free admission; 4-H Fairgrounds, 710 W. Woodside, McPherson, Kansas. Minerals, gems, fossils, jewelry, lapidary, kids' spin-n-win, hourly door prizes, concession stand, and rock identification. For more information contact Brett Whitenack at (620)242-6003.

May 4 – 5, 2019; **Mohave County Gemstoners Annual Show;** Saturday 9am-5pm and Sunday 9am-4pm; Free admission; Kingman Academy of Learning, 3420 North Burbank, Kingman, Arizona. Silent auction, educational displays, great educational activities for children, door prizes every half hour. From the precise and intricate to the delightfully whimsical, handcrafted jewelry and art, rocks of all kinds, mineral specimens, fire agate, turquoise, and much more. Something for everyone, come and share the fun. Contact Gary Gann (928) 7575-8121, www.gemstoners.org.

May 4 – 5, 2019; **Southern Nevada Gem & Mineral Society's Boulder City Spring Jamboree Gem and Mineral Show;** Saturday 9am-5pm and Sunday 9am-4pm; Parks and Recreational Building, 401 California Street, Boulder City, Nevada. For more information: snvgms.org.

May 4, 2019; **Colorado Mineral Society's Silent and Verbal Auction;** (See flyer on page 24) Saturday 11am-2:45pm; Free admission and parking; Holy Shepherd Lutheran Church, Lakewood, Colorado. Items will be available for direct sale (specimens, buckets of rough material, and equipment) that can be purchased during the auction (cash and carry). As always, the club will have a few auction tables reserved for only children to bid on. For more information: www.coloradomineralsociety.org.

May 11, 2019; **Enid Gem and Mineral Society's Annual Rock Swap;** Saturday 9am-4pm; Breezeway, north side, 200 block West Randolph, downtown Enid just west of the square, Enid, Oklahoma. Buy, sell, or trade gemstones, rocks, minerals and fossils. The swap is open to everyone with free admission. Shop and swap a variety of lapidary items including gemstone jewelry, tools, cabs, slabs and beads. Rough and petrified wood will also be available. For the kids, there will be a Spin'n'Win and grab bags. Come enjoy the day in a lovely breezeway setting right in downtown Enid. For more information: www.enidgemandmineral.org.



WASATCH GEM SOCIETY

Annual

**Gem
Mineral
Fossil
Show!**

**LARGEST CLUB
SHOW IN UTAH.**

**\$2.00
ADULTS
KIDS UNDER
12 FREE!**



APRIL
2019

**FRIDAY
19TH**
10am - 6pm

**SATURDAY
20TH**
10am - 6pm

**SUNDAY
21ST**
10am - 4pm

DOOR PRIZES • WHEEL OF FORTUNE • ROCK BAGS
SILENT AUCTION • KIDS TABLE • SHOW CASES • LAPIDARY DEMO'S
WIRE WRAPPING DEMO'S • SHOW & TELL

DEALERS OF CRYSTALS, ROCK, MINERALS, FOSSILS,
GEMSTONES, JEWELRY, AND MUCH MORE...



EASTER WEEKEND



**SALT LAKE COUNTY
EQUESTRIAN PARK AND EVENTS CENTER
2100 WEST 11400 SOUTH - SOUTH JORDAN, UTAH
www.wasatchgemsociety.com**



66th WICHITA GEM & MINERAL SHOW
Wichita Gem & Mineral Society, Inc.

"Rocks of the USA"

*Gemstones ~ Minerals ~ Fossils ~ Meteorites
Beads ~ Jewelry ~ Lapidary Supplies
Children's Activities ~ Demonstrations
Silent Auction Saturday and Sunday*

APRIL 26, 27, 28, 2019

Friday, April 26 *Education Day*

9 a.m. - 6 p.m.

Saturday, April 27

10 a.m. - 6 p.m.

Sunday, April 28

10 a.m. - 5 p.m.



Featuring dazzling gemstone jewelry, gems, crystals, beads, agates, polished stones, rocks, minerals, meteorites, and fossils.

See how rocks are cut and polished. See how unique jewelry is created using the wonders of nature. Special displays of rocks and minerals from throughout the world.

Attractions for children include - the junior rock pile, gem hunt, gem wheel and grab bags.

Dealers * Demonstrations * Exhibits

Gemstone identification, sphere making, cabbing, beading, arrowhead napping, faceting, wire wrapping, silversmithing, and much more.



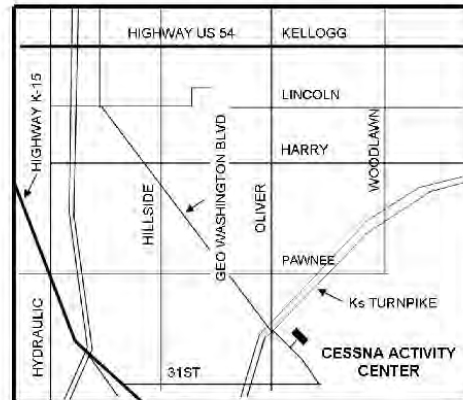
Cessna Activity Center
2744 George Washington Blvd
Wichita Kansas

C O U P O N	Adults: \$5.00, Youth 13-17, \$1.00, Children 12 and under free with an adult	C O U P O N	
	Proceeds help support a WSU Geology Scholarship.		
	For information: 316-742-3746 www.wgmsks.org		
	\$1 Off		\$1 Off
	Bring this coupon for \$1.00 Off Each Adult Admission		

66th Wichita Gem & Mineral Show
Wichita Gem and Mineral Society, Inc.

April 26, 27 & 28, 2019

Cessna Activity Center
2744 George Washington Blvd
Wichita, KS



Special Things for Children:

Junior rock pile, gem hunt, gem wheel, grab bags, demonstrations and exhibits.

Good food - Rest Area - Free Door Side Parking

For information contact:

316-742-3746

www.wgmsks.org,

Special Note

The coupon on the front of this flyer is good for \$1 off on ALL adult admissions in your group.

Follow us @Wichitagem



Follow us: Wichita Gem and Mineral Society





McPHERSON GEM & MINERAL CLUB 27th ANNUAL SALE

MINERALS, GEMS, FOSSILS,
JEWELRY, LAPIDARY & MORE!



MAY 3-5, 2019

Friday: 9:00 am – 6:00 pm

Saturday: 9:00 am – 6:00 pm Auction (Sat): 7:15 pm

Sunday: 10:30 am – 3:00 pm

FREE ADMISSION... FREE ADMISSION...FREE ADMISSION

KIDS – SPIN-N-WIN
HOURLY DOOR PRIZES
CONCESSION STAND FREE ROCK ID

**Located at the 4-H Fairgrounds: 710 W. Woodside
McPherson, KS 67460**

For Available Vending Space and Dealer Inquiries Contact:
Alan Hedrich 620-747-2265
(If no answer, please leave a message.)

For General Information Inquiries Contact:
Brett Whitenack
620-242-6003



Colorado Mineral Society's Silent and Verbal Auction Saturday May 4, 2019

***Minerals, fossils, faceted stones, lapidary equipment and
materials, books, jewelry, and fluorescent minerals***

- Door prizes every half hour; raffle at 2:45pm
- Special verbal auction at 1:00pm of museum quality specimens donated by special dealers
- Abundant parking, refreshments, and easy handicap access
- A few auction tables reserved for only children to bid on
- Special fluorescent minerals room
- A special direct sale of rocks and minerals will occur during the auction; buy and carry home!

Location:

Holy Shepherd Lutheran Church
920 Kipling Street (3 blocks north of West 6th Ave.)
Lakewood, Colorado 80215

Time:

11:00am to 2:45pm
Checkout will begin at 2:45pm (Cash or Check Only)



****A special invitation is extended to non-CMS members to participate in this auction as
sellers and buyers****

Limit of sales to three flats of materials. Sellers can get copies of bidding slips on our club
website: [http://www.coloradomineralsociety.org/Silent Auction Bid Slip.pdf](http://www.coloradomineralsociety.org/SilentAuctionBidSlip.pdf)

Note: Bid slips must be filled out prior to arriving at the auction!

www.coloradomineralsociety.org

Checkout will be by bidder number, so contact Leslie Osgood at 303-986-4488 for a bidder
number and/or seller letter (Cash, Check, and Credit will all be accepted at the auction)

Any questions about the auction should be directed to Ben Geller by phone at 303-550-5993 or by
email at: geller520@gmail.com



2019 RMFMS Convention Packet

Prescott Gem & Mineral Club

Invites you to the
16th Annual Prescott Gem and Mineral Show
And the
2019 RMFMS Convention



63 retail Gem, Mineral, Fossil, Meteorite, Beads, and Jewelry Dealers
Exhibition Cases

Geode Cracking & Fluorescent Box

Fluorescent Tent, Kid's Activities

Demos, Raffle

Specimen Identification Table

Gold Panning

Competitive Case Exhibits

Show Location:
Findlay Toyota Center
(Event Center)
3201 N. Main St
Prescott Valley, AZ 86323

August 2-4, 2019
Friday 9am-5pm
Saturday 9am-5pm
Sunday 9am-4pm

Admission:
\$5 Adults
\$4 Seniors, Vets, Students
Children under 12 Free with paid Adult
(Cash only for Admission. ATM Available)

Convention Headquarters:
Prescott Resort & Conference Center
1500 AZ-69
Prescott, AZ 86301

Visitor Information:
<http://www.prescottgemmineral.org/shows/>
<http://www.visit-prescott.com/>

Convention Information:
Colleen Denton - PGMC
928-308-3986



Prescott Gem & Mineral Club President's Letter 2019

I would like to thank the RMFMS for inviting the Prescott Gem & Mineral Club to host the 2019 Conference! It is an honor to be able to be of service in this capacity! I would also like to thank those who have been involved in making sure that this year's conference is a success for everyone!

It has been a real pleasure working closely with Gail Walker (PGMC Liaison/Conference Host) and I have been extremely impressed with her dedication and work! A huge thank you to Liz Thomas, Richard Jaeger, Gene Maggard and Jodi Brewster for all their help answering questions and aiding in making sure we are providing everything we need to make this event a great success!

I am very excited that the Conference is being held right here in Arizona and hope that for you Arizonians who have not been able to travel further distances, take the opportunity to attend the events and learn more about the RMFMS, who they are, why they are important, and what they offer to all of us as member clubs within its region!

For those of you who will be here from other states, we welcome you and are very pleased that you are coming! Arizona is a state that is considered "Rock Hounding Heaven" by many of us here and hope that you take home many fond memories! And of course, some amazing finds.....

We look forward to seeing you all here!
Colleen Denton
PGMC President





**RMFMS Convention
And
Prescott Gem and Mineral Club (PGMC) Annual Gem Show**

August 2, 3 and 4, 2019 at the Findlay Toyota Center (Event Center)
3201 W. Main St, Prescott Valley, AZ 86314

ADVANCE REGISTRATION FORM

Name(s): _____ Phone: _____

Address: _____

Name of Club/Society: _____

Check all that apply Federation:

AFMS____ RMFMS____ SCFMS____ CFMS____ MWF____ EFMLS____ NFMS____ SFMS____

Office: Officer____ Chairman____ Delegate____ Alternate____ Editor____ Judge____ Clerk____ Other____

Exhibitor: _____ (Exhibitors must complete this form as well as the Exhibitor form)

RMFMS member fee to the PGMC show is \$4.00 a day or purchase a three-day pass for \$8.00.

BREAKFAST with the EDITORS and Webmasters - \$32/person (see back page for menu detail)

Red, White and Blue Breakfast: \$32 (tax and gratuity included) Number _____ Total \$ _____

FEDERATION BANQUET - \$46 or \$50/person; select an entrée (see back page for menu detail)

Southwest Chicken: \$46 (tax and gratuity included) Number _____ Total \$ _____

Parmesan Chicken: \$46 (tax and gratuity included) Number _____ Total \$ _____

Sirloin Steak: \$50 (tax and gratuity included) Number _____ Total \$ _____

New York Steak: \$50 (tax and gratuity included) Number _____ Total \$ _____

Three-day pass for the show - \$8.00 Number _____ Total \$ _____
(must wear badge with prepaid sticker)

Grand total \$ _____

Deadline for advanced registration will be July 17, 2019. Make all checks payable to PGMC. Nonrefundable after July 17, 2019. Return to: PGMC (Attn: Colleen Denton), P.O. Box 3923, Chino Valley, AZ 86323.

Please make copies of all forms. Note: PGMC is not responsible for any liability while attending any convention or show activity.



2019 RMFMS Convention

COMPETITIVE EXHIBIT ENTRY FORM

This completed entry form **MUST** be *signed, dated* and *received* by **July 17, 2019**.

Please complete all information on this sheet pertaining to your exhibit

Mail to: **Les Presmyk, PO Box 1273, Gilbert, AZ 85299** or email to: **Presmyk@cox.net**

Name: _____ Phone: _____

Address: _____
Street City State Zip

Email: _____

Exhibitor Group: Master _____ Advanced _____ Novice _____ Jr _____ Soc _____ Jr. Soc _____

Division: _____ Exhibitor Class: _____

Exhibitor Group cannot be changed after Form has been accepted.
Anything else can be changed up until exhibit is finished before judging.
24 Hr Building Security: However, neither the RMFMS nor PGMC
assume any responsibility for loss or damage.

EXHIBIT CASE AND SPACE INFORMATION

(Please supply the following information to aide us in planning your exhibit.)

I will use my own case. YES _____ NO _____
Case Style: Upright _____ Slant Front _____
Dimensions: Width _____ Height _____ Depth _____

Do you need a case provided? Yes _____ NO _____

NOTE: Cases will be assigned space on tables 30 inches high.

(Bring your own risers if needed)

Exhibit Setup Time: Thursday, August 1 (12:00 PM to 6:00 PM)

I have read the current *AFMS Uniform Rules* and agree to abide by them.

I agree to leave my exhibit on display until the show closes on Sunday, at 4:00 PM.

Exhibitor's Signature: _____ Date: _____

Print Name: _____

If Junior Entry, Date Birth: _____

Exhibitor's Society: _____

I hereby certify, as an officer of the above-named Society, that the exhibitor is a member in good standing. To the best of my knowledge, he/she is eligible to exhibit in the stated classification according to the Rules.

Signature: _____ Title: _____ Date: _____



2019 RMFMS Convention

NONCOMPETITIVE DISPLAY CASE RESERVATION

Exhibits provided by members are a very important feature of our yearly show. If you can provide an exhibit and/or need a case, please fill out this form and return to: **PGMC (Attn: Colleen Denton), P.O. Box 3923, Chino Valley, AZ 86323**

The club has cases available. Please provide complete information below by **July 17, 2019**. Use back if necessary.

____ I will provide ____ show exhibits, and have my own cases, size _____
My exhibit(s) will be _____

____ I will provide ____ show exhibits but need cases.
____ Prescott (unlighted) cases will be OK (Size: 4' W, 2' D, 2 1/2' H).
My exhibit(s) will be _____

____ I will provide ____ show exhibits but need PGMC lighted cases.
My exhibit(s) will be _____ and
each will require _____ space as
indicated. (A PGMC case will be provided based on the space that you need.)

Name: _____

Address: _____
Street City State Zip

Phone: _____ Email: _____

Exhibits must be set up Thursday between 12 and 6pm and remain in place through 4 p. m. Sunday. They must be emptied and removed starting at 4pm on Sunday.

Signature: _____

Date: _____



2019 RMFMS Convention

JUNIOR CASH AWARD ENTRY FORM

This completed entry form **MUST** be signed, dated and received by **July 17, 2019**

Please complete all information on this sheet pertaining to your exhibit.

Mail to: Les Presmyk, PO Box 1273, Gilbert, AZ 85299 or email to: Presmyk@cox.net

Name: _____ Age: _____

Name of Club: _____

Exhibit Space Required: _____

Example: If the specimen is mounted on a piece of plastic that is 4 x 5 inches and the label is 2 X 4 inches then the footprint of the exhibit will be 6 x 5 inches. The Junior Chairman will know that this exhibit plus margins will require somewhere around 10 x 9 inches and will arrange the exhibits in cases for the best fit.

Certification: I certify that I collected and preformed all work on this specimen and that I am a member of a RMFMS club.

Jr. Signature: _____ Date: _____

Guardian Signature: _____ Date: _____



2019 RMFMS Convention

ROCKY MOUNTAIN FEDERATION OF MINERALOGICAL SOCIETIES CREDENTIALS FOR DELEGATES AND ALTERNATES

References: Articles of Incorporation, Article III, Membership Articles of Incorporation, Article VI, House of Delegates By-Laws, Article V, Credentials of Delegates By-Laws, Article VI, Use of Proxies

Society Name: _____

City: _____ State: _____

Delegate No. 1 (President) _____

Alternate No. 1 (Member) _____

Delegate No 2 (Member) _____

Alternate No. 2 (Member) _____

The above-named delegates and alternates have been chosen to represent this society at the Annual Business Meeting of the Federation, House of Delegates Meeting, to be held at Prescott, Arizona on Saturday, August 3, 2019.

Society Secretary: _____ Date: _____

Please Note: Delegates or alternates will only be allowed to vote if their society is in good standing.

This completed form must be returned to the RMFMS, Janet Smith, PO Box 311, Hardtner, KS 67057 / NLT July 17, 2019 or turned in at the Registration Table / NLT 5:00 pm, Friday, August 2, 2019.



2019 RMFMS Convention

PROXY

City: _____ State: _____

KNOW ALL MEN BY THESE PRESENT:

That the _____ Society does hereby
constitute and appoint _____

and _____ delegates with full power of
submission and revocation to represent the Society at the annual Business Meeting of the Rocky
Mountain Federation of Mineralogical Societies, to be held at Prescott, Arizona on Saturday, August 3,
2019, and at any adjournment thereof, and hereby authorize said proxies to vote at said meeting in our
stead, granting them all powers to which the Society is entitled at said meeting.

WE FURTHER CONSTITUTE AND APPOINT:

_____ and
_____ as alternates at said meeting
with like powers.

Society: _____

President: _____

Secretary: _____ Date: _____

Signature: _____ Date: _____



2019 RMFMS Convention

Host Hotel Information:

Prescott Resort and Conference Center

(Located 8.1 miles from the Prescott Gem and Mineral Show)

1500 AZ-69

Prescott, AZ 86301

1-800-967-4637

(use this 800 # to get the Group rate)

Rooms/Base Rates:

RATES	SINGLE	DOUBLE	TRIPLE	QUAD
Deluxe Room	\$119	\$119	\$129	\$139
Suite	\$139	\$139	\$149	\$159

Check in time is 3:00pm

Check out time is 11:00am

All reservations must be made by **July 17, 2019**. After such date or if all rooms that have been blocked off are unavailable, additional reservations will continue to be accepted based upon availability at the Resort's prevailing rate.

The Hotel Group name for this Conference is Rocky Mountain Federation of Mineralogical Society (hereinafter referred to as "Group")

Other Hotels in Nearby area, Prescott and Prescott Valley:

Hampton Inn & Suites

2901 North Glassford Hill Road
Prescott Valley, AZ 86314
928-772-1800
0.7 miles from Findlay Toyota Center
7.7 miles from Prescott Resort and Conf Center

Comfort Suites

2601 N. Crownpointe Drive
Prescott Valley, AZ 86314
928-771-2100
2.5 miles from Findlay Toyota Center
6.5 miles from Prescott Resort and Conf Center

Green Tree Inn

7875 E. State Route 69
Prescott Valley, AZ 86314
928-772-8600
0.8 miles from Findlay Toyota Center
8.3 miles from Prescott Resort and Conf Center

Americas Best Value Inn

8383 E. State Route 69
Prescott Valley, AZ 86314
928-772-2200
1.4 miles from Findlay Toyota Center
8.9 miles from Prescott Resort and Conf Center

Residence Inn by Marriot Prescott

3599 Lee Circle
Prescott, AZ 86301
928-775-2232
5.1 miles from Findlay Toyota Center
3.0 miles from Prescott Resort and Conference Center



2019 RMFMS Convention

SCHEDULE

<u>DATE</u>	<u>TIME</u>	<u>ACTIVITY</u>	<u>LOCATION</u>
August 1, 2019	1 – 5 pm	Registration	Prescott Resort
	12 – 6pm	Exhibit Set-up	Event Center
August 2, 2019	TBD am	Judge's Meeting	Event Center
	9am	Show Opens	Event Center
	1 – 5pm	Registration	Prescott Resort
	2 – 4pm	Exec Committee Meeting	Event Center
August 3, 2019	5pm	Show Closes	Event Center
	7am	Editor/Web Master Breakfast	Prescott Resort
	9am	Show Opens	Event Center
	10 – 11am	Judges/Exhibit Conf.	Event Center
	1 – 4pm	Delegate's Meeting	Prescott Resort
	5pm	Show Closes	Event Center
	5:30 – 6:30pm	Happy Hour	Prescott Resort
	6:30pm	Awards Banquet	Prescott Resort
August 4, 2019	9am	Show Opens	Event Center
	4pm	Show Closes	Event Center

Prescott Gem and Mineral Club (PGMC) hosting a field trip on Monday, August 5th.

We will be offering a Field Trip on Monday, August 5, 2019 for Perkinsville Agate. We will be meeting in Chino Valley just north of Prescott (10 mi) in the Safeway parking lot located at 1031 N. AZ-89, Chino Valley, AZ. We will be meeting at 7:00am and pulling out at 7:30am sharp! The road going out to this site is maintained well and no special vehicle requirements are needed. This locale offers great surface collecting of various sizes from tumble material to double fist size rough fine for slabbing and cabbing! It will be August in our Arizona Desert, and we do have a lot of cactus so be sure to wear sturdy jeans, good hiking boots with good ankle support, long sleeve shirt and hats if you are sensitive to the sun.... Sunscreen!!! Water, water, water!!! We will be making sure we have extra water available in a cooler for anyone who needs it! Don't forget something to snack on as well! Lord willing, we don't need it, we do have a full First Aid Kit on hand just in case! Likely we will spend a couple hours collecting. When finished, you can return to the Prescott for sightseeing or venture out to Jerome, AZ. It's an old mining town that is a fabulous place to visit with some great restaurants for lunch! There also is the old Gold King Mine & Ghost Town which is a great place to take in some of the old mining history of this great town! I believe there is a fee of about \$7 to enter the old mining area through the gift shop but well worth it!

Please **RSVP** via email by **July 17, 2019** to secure your name in the list for this trip. For more information about the Field Trip, feel free to contact Jim Turner via email at turner7321@sbcglobal.net!

Jerome, AZ
<http://azjerome.com/jerome/>

Gold King Mine and Ghost Town
<https://goldkingmineghosttown.com/>



Prescott Resort & Conference Center Menu

Editor's Breakfast:

Red, White and Blue Breakfast: \$32 (tax and gratuity included)
Soft Scrambled Eggs with Cheddar Jack Cheese and Fresh Chives
Applewood Smoked Bacon and Country Sausage Links
Roasted Garlic Rosemary New Potatoes -or- Potatoes O'Brien
Individual Yogurt and Granola
Display of Fresh Baked Pastries and Croissants
Fruit Preserves and Sweet Butter
Sliced Seasonal Fresh Fruit
Starbucks * Coffee, Hot Tea Selection and Chilled Fruit Juices

Banquet Dinner:

Southwest Chicken: \$46 (tax and gratuity included)
Organic Spring Mix, Candied Pecans, Baby Tomatoes, Queso Fresco and Cilantro Lime Vinaigrette

Signature Rubbed Breast of Chicken with Pasilla Cream Sauce
Bacon and Onion Infused Hominy Puree, Seasonal Vegetable

Dulce De Leche Cake
Layers of Caramel Sponge Cake with Sweet Caramel Mousse
Topped with Caramel Chips

Parmesan Chicken: \$46 (tax and gratuity included)
Romaine Salad with Parmesan Crisp, Croutons, Tomatoes and Creamy Caesar Dressing

Parmesan Chicken with White Wine Cream Sauce
Rice Pilaf, Seasonal Vegetables

Tiramisu Cake
Espresso Soaked Lady Fingers with Coffee Liqueur and Mascarpone Filling

Sirloin Steak: \$50 (tax and gratuity included)
Spinach and Arugula Salad with Crumbled Feta Cheese,
Candied Pecans, Grape Tomatoes and Balsamic Vinaigrette

Grilled Sirloin Steak with Spiced Rum Demi-Glaze
Winter Spiced Sweet Potato Puree, Seasonal Vegetables

Hazelnut Toffee
Layers of Chocolate Genoise
Filled with Hazelnut Mousse

New York Steak: \$50 (tax and gratuity included)
Mixed Green Salad with Marinated Baby Mozzarella, Julienne Heirloom
Carrots, Baby Tomatoes and Raspberry Vinaigrette

Grilled New York Steak with Red Wine Reduction
Roasted Yukon Potatoes, Seasonal Vegetables

Chocolate Crunch
Bottom made of Imported Wafer and Praline Crust,
Topped with Silky Chocolate Mousse



Prescott Gem & Mineral Club

Thanks for your letting us host the 2019 RMFMS Convention

and attending our

16th Annual Prescott Gem and Mineral Show

On August 2-4, 2019.

We hope to see you rocking hunting in our area again or at least hiking, shopping or visiting historical locations.

Have a great stay and safe travels.

Remember, if someone asks you if that is a good rock, just say
" Yes, it's a **LEAVARITE!**"

Good-bye for now...



Rocky Mountain Federation of Mineralogical Societies

Convention Presidents Letter 2019

I want to say I am thrilled to have the opportunity to come to Prescott Arizona with our RMFMS Convention. Working with Colleen Denton, Prescott Gem and Mineral Club President and Gail Walker has been a treat. They have worked hard to make this a very successful show and convention and I want to thank them and their club for coming forward and hosting this year's show and convention.

Wow, what a wonderful time this has been for me to serve as your president. I could never express how truly blessed I feel that you allowed me to be your president. I have truly enjoyed it and I can only hope I did a good job for you.

I have learned a lot and I know there is so much more to learn, and the two years was not enough time to do this but enough time to make the best friends that I pray last a life time.

I must thank my board. Bob Regner, the Vice President, he was a great person to get to know and to work with. I know if he is elected president next, he will be a great one. Wayne Cox, the Secretary, did an outstanding job and answered all my many questions that I had for him. He has always done a wonderful job serving the RMFMS and will continue to do so. Gene Maggard, our Treasurer, I can not say enough about Gene. I bent his ear on many occasions and he was always so very calm and cordial to me and answered my pleas for help in a moment's notice. He will be a hard person to replace on this board when the time comes. Cinda Kunkler, our Historian, is a one of a kind. She always has that huge smile and when she talks, she lights up a room with such wisdom. And what a worker. She is a blessing. Richard Jaeger, our Past President, is my mentor. He talked to me and calmed me with every step of the way. I can not thank him enough and know who every comes across his path is very much blessed with his help. Diane Weir, another Past President. Diane is a friend. She was not around much but I can say she is genuine. She knows her stuff and will be there if needed. The State Directors, Jodi Brewster for Arizona/Nevada, Kathy Honda for Colorado, Bill Smith for Kansas, Dr. Bob Carlson for New Mexico/Texas, Russ Oliger for North Dakota, Virgil Richards and Cecelia Evans for Oklahoma/Arkansas Sony Hemsher for South Dakota, Stan Strike for Wyoming and Tom Burchard for Utah. You guys stepped up to the plate and did a marvelous job for your states. It shows with new clubs coming in and the attendance to all the area shows and the convention. Many of you helped me and held me up when I was down. Thank you so very much for that.

For all of you who supported me by agreeing to be chairs, Heather Woods our Editor (she does an outstanding job), Linda Jaeger our Publications Contest Chair, Jim McGarvey now Joel Johnstone for Webmaster (Jim you will be missed), Wayne Cox for Finance, Dr. Carlson and now Richard Jaeger for Convention Advisory, Gene Maggard for Insurance, Richard Jaeger,



Judy Beck and Dr. Carlson for Nominations, Pete Pedreski for Fluorescent Technical and Mineral Technical, Roger Burkhalter for Fossil Technical, Bill Smith for Lapidary Technical, Gene and Peggy Maggard for Programs Chair and Program Library, Jennifer Gerring for Webmaster Contest, Bill Smith for Boundaries, Kay Waterman for Membership Directory, Sheri Johnson for ACROY, DeLane Cox for All American Club and Public Relations, Mike Nelson for International Relations, Judy Beck, Dr. Carlson, DeLane Cox, Richard Jaeger and Bill Smith for Long Range Planning, Richard Jaeger for Name Badges, Gene Maggard for Parliamentarian, Dr. Carlson for Trophies, Terri Harris for Junior Programs, Peggy sue Moore for Ribbons, Richard Jaeger for Scholarships, Finis Riggs for Supplies, and Janet Smith for Credentials, these programs could not go on it was not for you standing up and taking charge. We need leaders and you lead in all we needed. Thank you.

The Public Land Advisory (PLAC), Mike Nelson for Colorado, Nebraska and North Dakota, Dr. Alex Schauss for Arizona, Jared Kyner for Kansas, Mel Stairs for New Mexico/Texas, Stan Nowak for Oklahoma and Kansas, Brandon Nelson for South Dakota, Jack Johnston for Utah/Nevada Richard Gerow for Wyoming thank you or all your work on trying to keep our lands open for our rock hounding adventures and keeping us up to date on what the government is doing toward our hobby.

The Uniform Rules group, Lee Whitebay, B. Jay Bowman, Roger Burkhalter, Robert Carlson, Paul Otto and Leon Reeder. We need good judges and judges that will keep up with the rules and listen to the needs and desires of those who love to show our rock to everyone. Thank you for your hard work.

This is just a start of those who have helped me in so many ways, but this is the group of people that work for RMFMS to make it a great Federation. It can only be great by those who help with their hearts. I could only be a good president by putting great people around me that would help me when I made mistakes. I will say it was fun, scary and exciting all the time. It was a dream and a blessing to be in this position. Thank you from the bottom of my heart.

Liz Thomas
RMFMS President



2019 RMFMS Board and Committees

President	Liz Thomas	bthomas630@cox.net
Vice President	Bob Regner	rnregner@aol.com
Secretary	Wayne Cox	waynec3@earthlink.net
Treasurer	Gene Maggard	gandpmaggard@gmail.com
Historian	Cinda Kunkler	cindakunkler@att.net
Past President	Diane Weir	dcweir@cablone.net
Past President	Richard Jaeger	rigrsci@aol.com
Arizona State Director	Jodi Brewster	aznvstatedirector@gmail.com
Colorado State Director	Kathy Honda	Katherine.honda@ucdenver.edu
Kansas State Director	Bill Smith	beetlebill@kanokla.net
New Mexico/Texas State Director	Dr. Robert Carlson	illegitimusnoncarborundum@inbox.com
North Dakota State Director	Russ Oliger	roliger@bektel.com
Oklahoma/Arkansas State Director	Cecilia Evans	mail@omgs-minerals.org
South Dakota/Nebraska State Director	Sony Hemscher	sony2755@hotmail.com
Wyoming State Director	Stan Strike	wydir@wsmsg.org
Utah State Director	Tom Burchard	roxhund@aol.com
AFMS All American Club of the Year	Delane Cox	delanec3@earthlink.net
AFMS Club Rockhound of the Year	Sheri Johnson	sherisrocks89121@gmail.com
Boundaries	Bill Smith	beetlebill@kanokla.net
Convention Management	Richard Jaeger	rigrsci@aol.com
Credentials	Janet Smith	beetlebill@kanokla.net
Directory	Kay Waterman	kay.waterman@cox.net
Editor	Heather Woods	rmfmseditor@gmail.com
Finance	Wayne Cox	Waynec3@earthlink.net
Flourescent Technical	Pete Modreski	pmodreski@aol.com
Fossil Technical	Roger Burkhalter	rjb@ou.edu
Gold Pan Award	Judy Beck	lkbeckfam@gmail.com
Gold Pan Award	Richard Jaeger	rigrsci@aol.com
Gold Pan Award (chair)	Bob Carlson	illegitimusnoncarborundum@inbox.com
Insurance	Gene Maggard	gandpmaggard@gmail.com
International Relations	Mike Nelson	csrockguy@yahoo.com
Junior Programs	Terri Harris	seeingeagle@comcast.cnet
Lapidary Technical	Bill Smith	beetlebill@kanokla.net
Long-Range Planning	Richard Jaeger	rigrsci@aol.com
Long-Range Planning	Bill Smith	beetlebill@kanokla.net
Long-Range Planning (chair)	Judy Beck	lkbeckfam@gmail.com
Mineralogy Technical	Pete Modreski	pmodreski@aol.com



Name Badges	Richard Jaeger	rigrsci@aol.com
Nominations	Judy Beck	lkbeckfam@gmail.com
Nominations (chair)	Richard Jaeger	rigrsci@aol.com
Nominations	Diane Wier	
Parliamentarian	Gene Maggard	gandpmaggard@gmail.com
Program Library	Gene & Peggy Maggard	gandpmaggard@gmail.com
Programs Contest	Gene Maggard	gandpmaggard@gmail.com
Public Relations	Delane Cox	Delanec3@earthlink.net
Ribbons	Peggy Sue Moore	moorepeggysue@gmail.com
RMFMS Show Chairman	Gail Walker	gawalkeraz@cableone.net
Safety		
Scholarship	Richard Jaeger	rigrsci@aol.com
Stationary	Robert Carlson	illegitimusnoncarborundum@inbox.com
Supplies	Finis Riggs	Lanariggs63@yahoo.com
Trophies	Robert Carlson	illegitimusnoncarborundum@inbox.com
Webmaster	Joel Johnstone	joel@johnstonedesigns.com
Webmaster Contest	Jennifer Gerring	jgerring@gmail.com
PLAC Arizona	Dr. Alex Schauss	Aschauss@email.arizona.edu
PLAC Colorado/Nebraska/ North Dakota	Mike Nelson	csrockguy@yahoo.com
PLAC Kansas	Jared Kyner	Jskyner79@gmail.com
PLAC New Mexico/Texas	Mel Stairs	mels@swcp.com
PLAC North Dakota	Mike Nelson	csrockguy@yahoo.com
PLAC Oklahoma/Arkansas	Stan Nowak	Snowak48@yahoo.com
PLAC South Dakota	Brandon Nelson	Nelson.bc80@gmail.com
PLAC Utah/Nevada	Jack Johnson	J4x4jj@comcast.net
PLAC Wyoming	Richard Gerow	rgwizzard@wyoming.com
Uniform Rules	Leon Reeder (chair) Lee Whitebay Jay Bowman Roger Burkhalter Dr. Robert Carlson Paul Otto	Leonreeder47@yahoo.com lwhitebay@poncacity.net bjb@wildblue.net rjb@wildblue.net illegitimusnoncarborundum@inbox.com mineralspecimens@hotmail.com